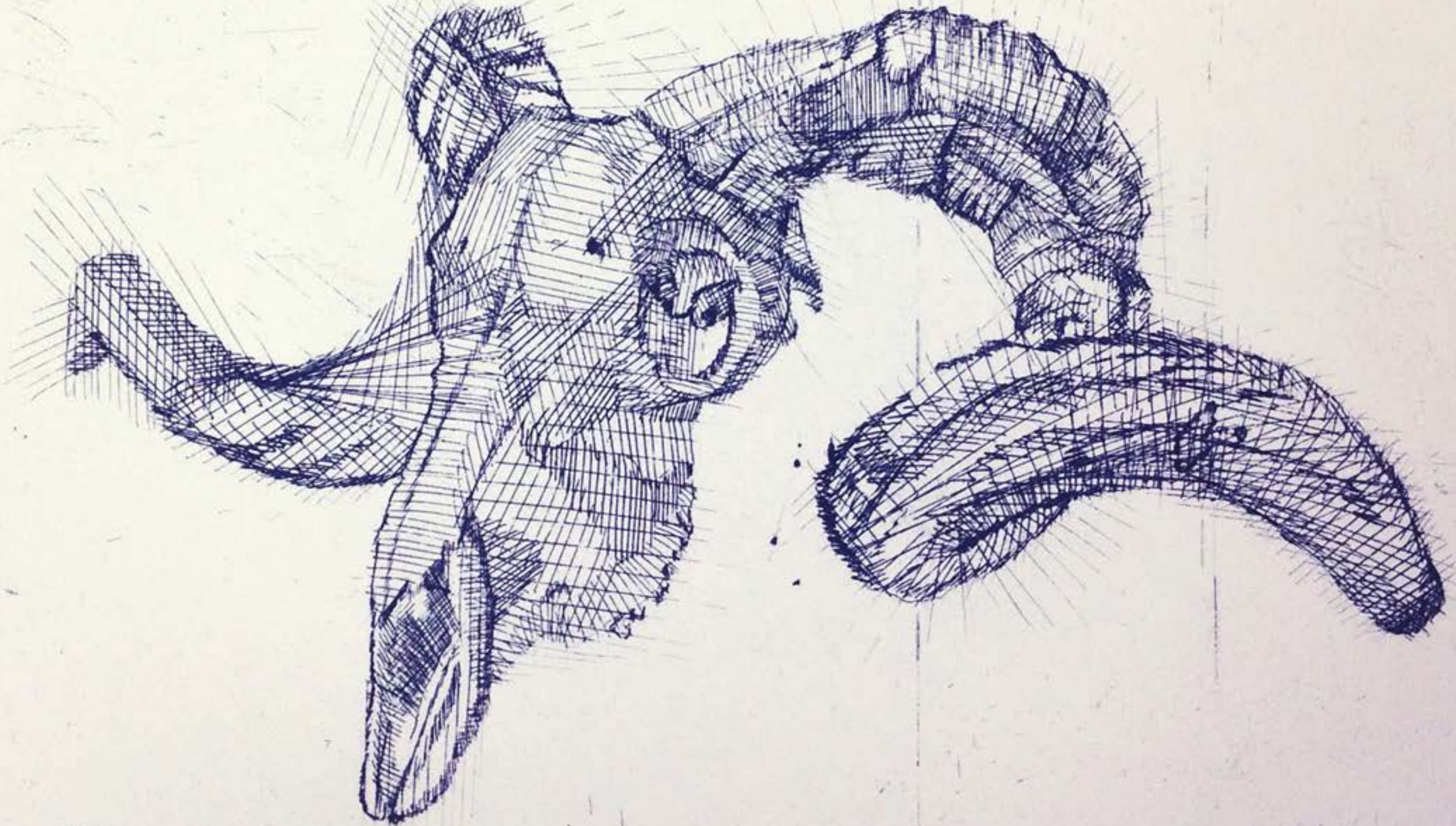


Bevan de Wet *vestige*



04 -25 September 2014

NIROXprojects

NIROXprojects | 264 Fox Street | Arts on Main | Maboneng Precinct | Johannesburg

Bevan de Wet's new body of work is comprised of a collection of etchings, in which he explores the fragmentation of memory, nostalgia and cultural identity. The two 4m prints are the key works on the show and, consist of traces of shaped etching plates - a collection spanning 7 years - deconstructed and arranged to form a museum-like display of objects and artefacts. De Wet's interest in how history is chronicled in museums has lead him to explore different ways of viewing, interrogating the emphasis on aesthetic juxtaposition rather than ostensible understanding. Supplementary to this, de Wet sets up figurative and conversational relationships with seemingly mythological characters. These are often drawn from spaces of spectacle such as zoological and museum dioramas.

ARTIST STATEMENT

Bevan de Wet's artistic practice engages with symbolic, cultural and anthropological readings of the body. The exploration of masquerade in his work is a key factor, through which he attempts to create his own mythological language. This often forms a basis for conversation and narration, which is used to deconstruct history and identity. De Wet engages with the skins surface as a boundary, receptive to patterning, mapping and fragmenting. The continual reconstruction of imagery allows for a negotiation of that dichotomy between the civilized self and the instinctive, untamed self; which is explored through hybridity and its symbolism. A supplementary facet to this is the use of objects, artefacts, fragments and tools, which are often arranged and displayed as collected items, tracing an often false and non linear historical trajectory. This fracturing of imagery further investigates notions of displacement and belonging, thus evoking a sense of unease and disconnectedness, which he feels is particularly relevant to his own cultural history.

BIO

Bevan de Wet is an artist and printmaker based in Johannesburg. He studied Fine Art at Rhodes University, Grahamstown, under the mentorship of Dominic Thorburn, Christine Dixie and Diane Victor. He majored in printmaking and completed his BFA with distinction. De Wet began his career as a practicing artist in 2009. He has since returned to Rhodes for 2 semesters as a guest lecturer in the printmaking department. At the end of 2010 he returned to JHB where he began working as a Collaborative Printer at David Krut Workshop. Since 2011 De Wet has worked at Artist Proof Studio in Newtown as a professional printmaker, print technician and academic facilitator. He has worked with artists such as Gerhard Marx, Walter Oltmann and William Kentridge. De Wet also facilitates regular printmaking workshops at the Sharon Sampson studio in Illovo. He has exhibited extensively both locally and internationally including TWENTY: Contemporary Art from South Africa, North Carolina (2014); South African Voices: A New Generation of Printmakers, Washington Printmakers Gallery (2014); Multiplied Art Fair, Christies Auction House, London (2013); Making Connections, Southern Graphics Conference International, Milwaukee (2013). In 2012 De Wet was awarded a fellowship from the Ampersand Foundation (New York 2013) and also received the Thami Mnyele Art on Paper Merit Award. De Wet is a recent ABSA L'Atelier Merit Award Winner with the Sylt Foundation, granting him a 2 month residency on the Island of Sylt (Germany 2015).

Bevan works primarily on paper, exploring various forms of printmaking namely intaglio, relief, monotype and screenprinting

NIROXprojects open hours: Tuesday - Sunday, 10 am - 4 pm.

NIROXprojects | 264 Fox Street | Arts on Main Maboneng Precinct | Johannesburg

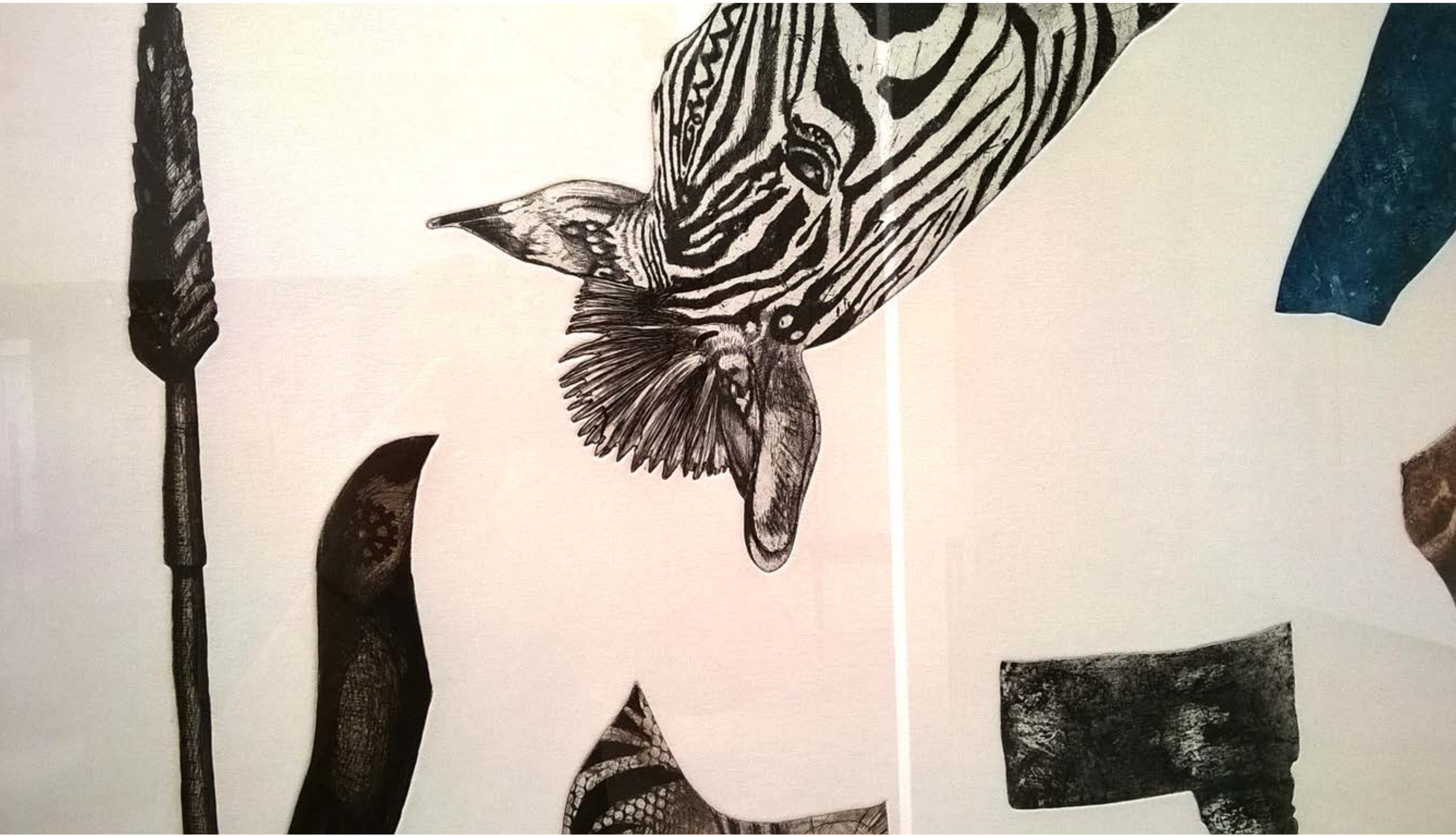


Installation view | Retrospect: Bevan de Wet | Vestige | NIROXprojects | 2014











Bevan de Wet | Vestige



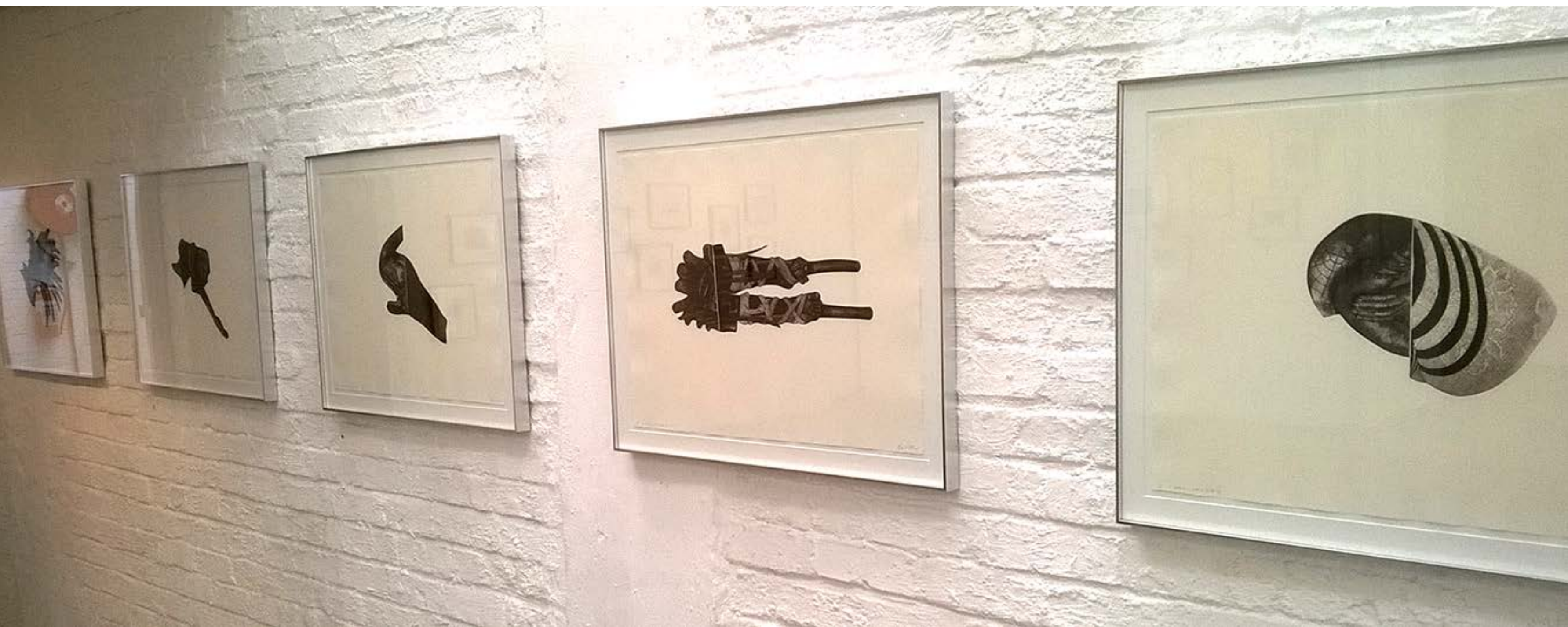
Bevan de Wet | Vestige



(left) 1: Collection 1 | Etching & Aquatint | 19.5cm x 25cm | 2013 | Ed 12 | (right) 2: Copper Plate, used for printing Collection 1
R1710 (unframed) (incl VAT) | R2520 (framed) (incl VAT)



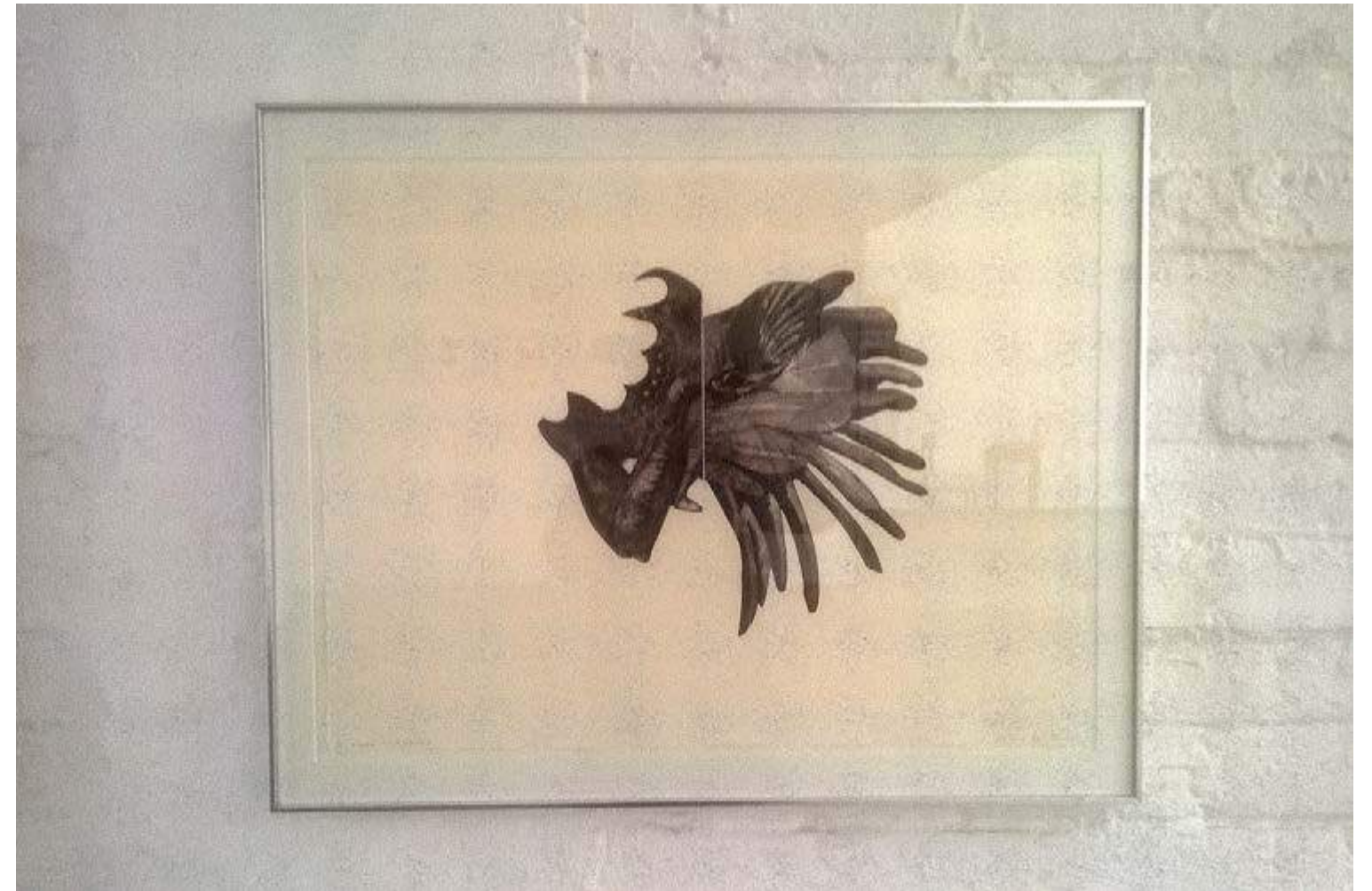
(Installation view) A Zebra is not a Bird I - IX | Etching & Aquatint | 50cm x 66cm | 2014 | Ed 6
R3 940 each (incl VAT) (unframed) | R5800 each (incl VAT) (framed) | R34 200 full set (unframed) (incl VAT)



(Installation view) A Zebra is not a Bird I - IX | Etching & Aquatint | 50cm x 66cm | 2014 | Ed 6
R3 940 each (incl VAT) (unframed) | R5800 each (incl VAT) (framed) | R34 200 full set (unframed) (incl VAT)



A Zebra is not a Bird I | Etching & Aquatint | 50cm x 66cm | 2014 | Ed 6
R3 940 each (incl VAT) (unframed) | R5800 each (incl VAT) (framed)



A Zebra is not a Bird II | Etching & Aquatint | 50cm x 66cm | 2014 | Ed 6
R3 940 each (incl VAT) (unframed) | R5800 each (incl VAT) (framed)



A Zebra is not a Bird III | Etching & Aquatint | 50cm x 66cm | 2014 | Ed 6
R3 940 each (incl VAT) (unframed) | R5800 each (incl VAT) (framed)



A Zebra is not a Bird IV | Etching & Aquatint | 50cm x 66cm | 2014 | Ed 6
R3 940 each (incl VAT) (unframed) | R5800 each (incl VAT) (framed)



A Zebra is not a Bird V | Etching & Aquatint | 50cm x 66cm | 2014 | Ed 6
R3 940 each (incl VAT) (unframed) | R5800 each (incl VAT) (framed)



A Zebra is not a Bird VI | Etching & Aquatint | 50cm x 66cm | 2014 | Ed 6
R3 940 each (incl VAT) (unframed) | R5800 each (incl VAT) (framed)



A Zebra is not a Bird VII | Etching & Aquatint | 50cm x 66cm | 2014 | Ed 6
R3 940 each (incl VAT) (unframed) | R5800 each (incl VAT) (framed)



A Zebra is not a Bird VIII | Etching & Aquatint | 50cm x 66cm | 2014 | Ed 6
R3 940 each (incl VAT) (unframed) | R5800 each (incl VAT) (framed)



A Zebra is not a Bird XI | Etching & Aquatint | 50cm x 66cm | 2014 | Ed 6
R3 940 each (incl VAT) (unframed) | R5800 each (incl VAT) (framed)





Unlikely Allies II | Etching & Aquatint | 200cm x 84cm | 2014 | Ed 12
R19 000 (unframed) (incl VAT) | R24 600 (framed) (incl VAT)



(Detail) Unlikely Allies II | Etching & Aquatint | 200cm x 84cm | 2014 | Ed 12
R19 000 (unframed) (incl VAT) | R24 600 (framed) (incl VAT)



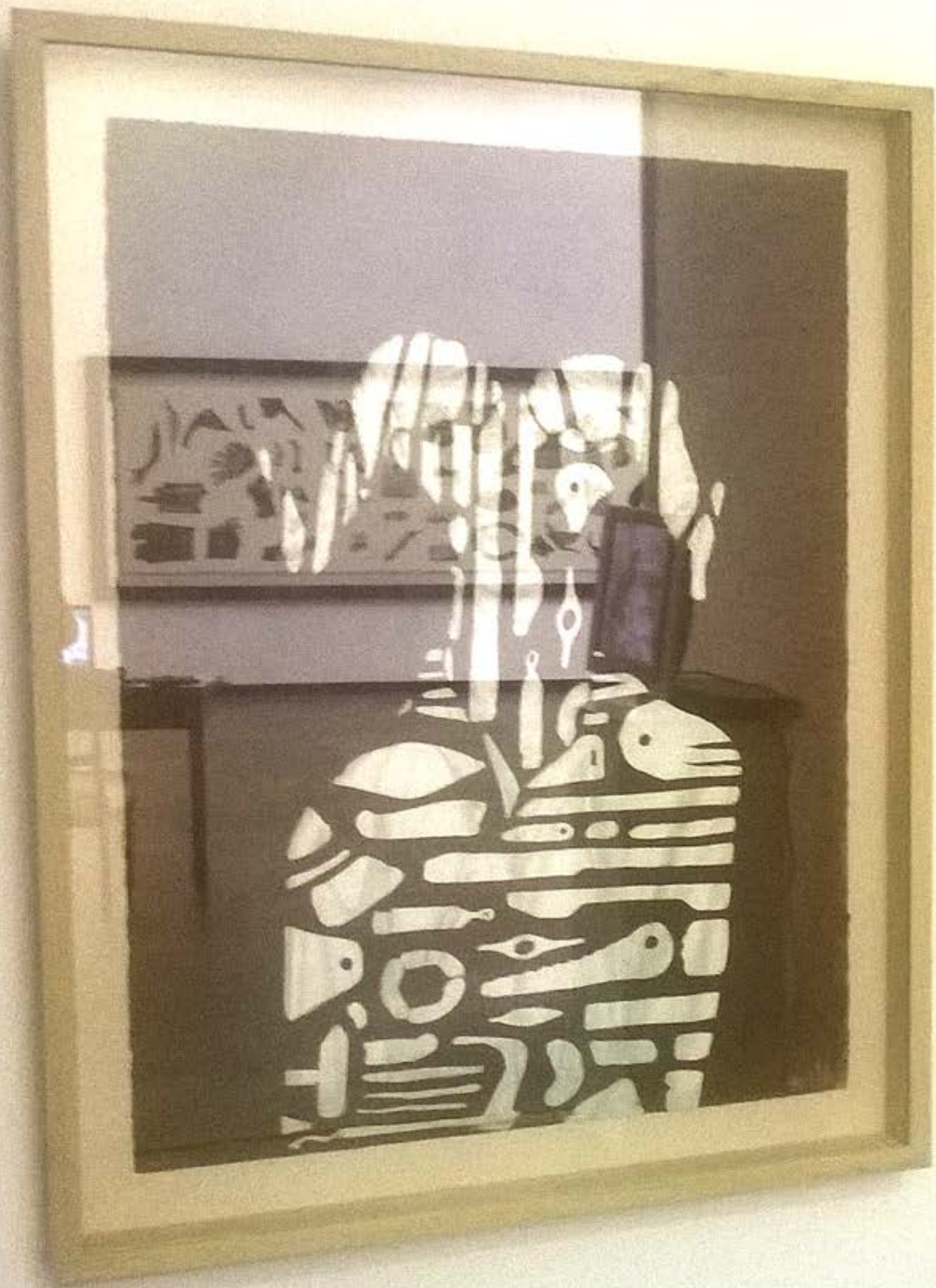
Unlikely Allies I | Etching & Aquatint | 200cm x 84cm | 2014 | Ed 12
R19 000 (unframed) (incl VAT) | R24 600 (framed) (incl VAT)



(Detail) Unlikely Allies I | Etching & Aquatint | 200cm x 84cm | 2014 | Ed 12
R19 000 (unframed) (incl VAT) | R24 600 (framed) (incl VAT)



Untitled (Bird Man) | Mixed media Prints embedded in handmade hemp paper | 140cm x 62cm | 2014 | Ed 1/1
R16 500 (framed) (incl VAT)



NHM Refractions V3.2 | Monotype | 76cm x 56cm | 2013 | Ed 1/1
R8700 (framed) (incl VAT)



NHM Refractions V3.1 | Monotype | 76cm x 56cm | 2013 | Ed 1/1
R8700 (framed) (incl VAT)









Study 17 (Bird Man) | Etching | 30.5cm x 24.5cm | 2014 | Ed 12
R2052 (unframed) (incl VAT) | R2862 (framed) (incl VAT)



Study 9 (Night Landscape) | Etching & Aquatint | 20.5cm x 24.5cm | 2014 | Ed 12
R1710 (unframed) (incl VAT) | R2520 (framed) (incl VAT)



Study 18 (Rara Avis) | Etching & Aquatint | 27cm x 25cm | 2014 | Ed 12
R2052 (unframed) (incl VAT) | R2862 (framed) (incl VAT)



Study 3 (Explosion) | Etching | 26cm x 26cm | 2014 | Ed 12
R2052 (unframed) (incl VAT) | R2862 (framed) (incl VAT)



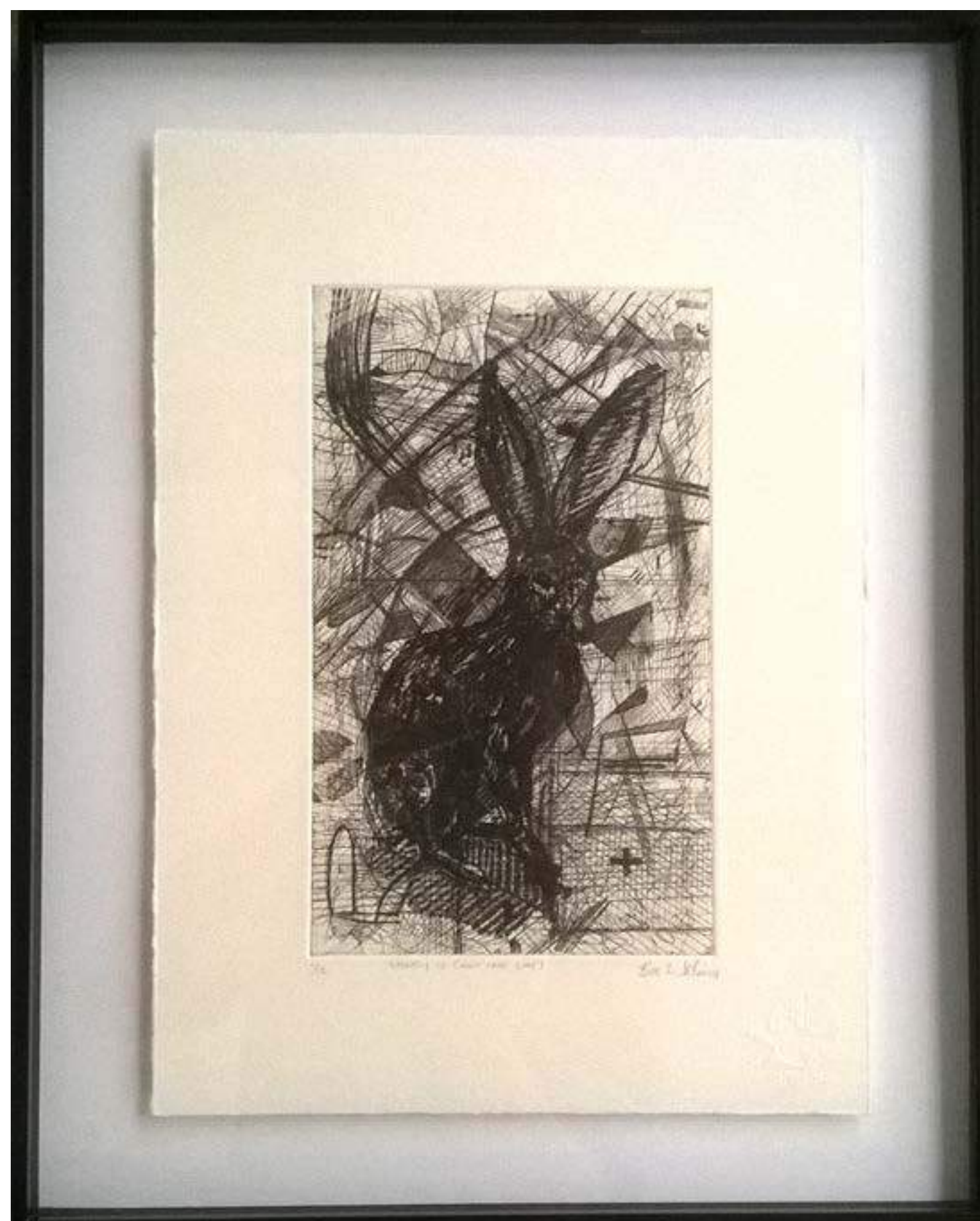
Study 1 (∞) | Etching & Aquatint | 38cm x 28.5cm | 2014 | Ed 12
R2394 (unframed) (incl VAT) | R3204 (framed) (incl VAT)



Study 7 (Clouds over Supermoon) | Etching & Aquatint | 22cm x 26.5cm | 2014 | Ed 12
R1710 (unframed) (incl VAT) | R2520 (framed) (incl VAT)



Study 15 (Suspended Skull) | Etching | 24.5cm x 30cm | 2014 | Ed 12
R2052 (unframed) (incl VAT) | R2862 (framed) (incl VAT)



Study 12 (Not the Cat | Etching & Aquatint | 32cm x 23.5cm | 2014 | Ed 12
R2052 (unframed) (incl VAT) | R2862 (framed) (incl VAT)



Study 16 (Unravelling Venus) | Etching | 30.5cm x 23cm | 2014 | Ed 12
R2052 (unframed) (incl VAT) | R2862 (framed) (incl VAT)



Study 10 (Crackle Sound) | Etching | 21cm x 25cm | 2014 | Ed 12
R1710 (unframed) (incl VAT) | R2520 (framed) (incl VAT)



Study 11 (Moon Site) | Etching & Aquatint | 24.5cm x 20cm | 2014 | Ed 12
R1710 (unframed) (incl VAT) | R2520 (framed) (incl VAT)



Study 8 (Rara Avis) | Etching | 25.5cm x 21.5 cm | 2014 | Ed 12
R1710 (unframed) (incl VAT) | R2520 (framed) (incl VAT)



Study 13 (The Council) | Etching | 31cm x 24.5cm | 2014 | Ed 12
R2052 (unframed) (incl VAT) | R2862 (framed) (incl VAT)



Study 5 (Rara Avis) | Etching & Aquatint | 26.5cm x 26cm | 2014 | Ed 12
R2052 (unframed) (incl VAT) | R2862 (framed) (incl VAT)



Study 14 (Still Life with Fossils) | Etching | 24.5cm x 30cm | 2014 | Ed 12
R2052 (unframed) (incl VAT) | R2862 (framed) (incl VAT)



Study 20 (Self portrait as Bird) | Etching | 30.5 cm x 25cm | 2014 | Ed 12
R2052 (unframed) (incl VAT) | R2862 (framed) (incl VAT)



Study 6 (Black Sun) | Etching & Aquatint | 25cm x 26cm | 2014 | Ed 12
R2052 (unframed) (incl VAT) | R2862 (framed) (incl VAT)



Study 2 (Old postcard from nowhere) | Etching & Aquatint | 30.5cm x 39.5cm | 2014 | Ed 12
R2394 (unframed) (incl VAT) | R3204 (framed) (incl VAT)



Study 19 (The Wish) | Etching & Aquatint | 24.5cm x 29.5cm | 2014 | Ed 12
R2052 (unframed) (incl VAT) | R2862 (framed) (incl VAT)



Study 4 (Not the Moon) | Etching & Aquatint | 26cm x 24cm | 2014 | Ed 12
R2052 (unframed) (incl VAT) | R2862 (framed) (incl VAT)

Catalogue layout and design by Neil Nieuwoudt

NIROXprojects | 264 Fox Street | Arts on Main | Maboneng Precinct | Johannesburg

NIROXprojects